

KEY FIGURES OF YELLOW FEVER



34 COUNTRIES IN AFRICA AND **13** COUNTRIES
IN CENTRAL AND SOUTH AMERICA ARE ENDEMIC
OR HAVE ENDEMIC REGIONS.¹



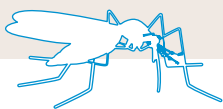
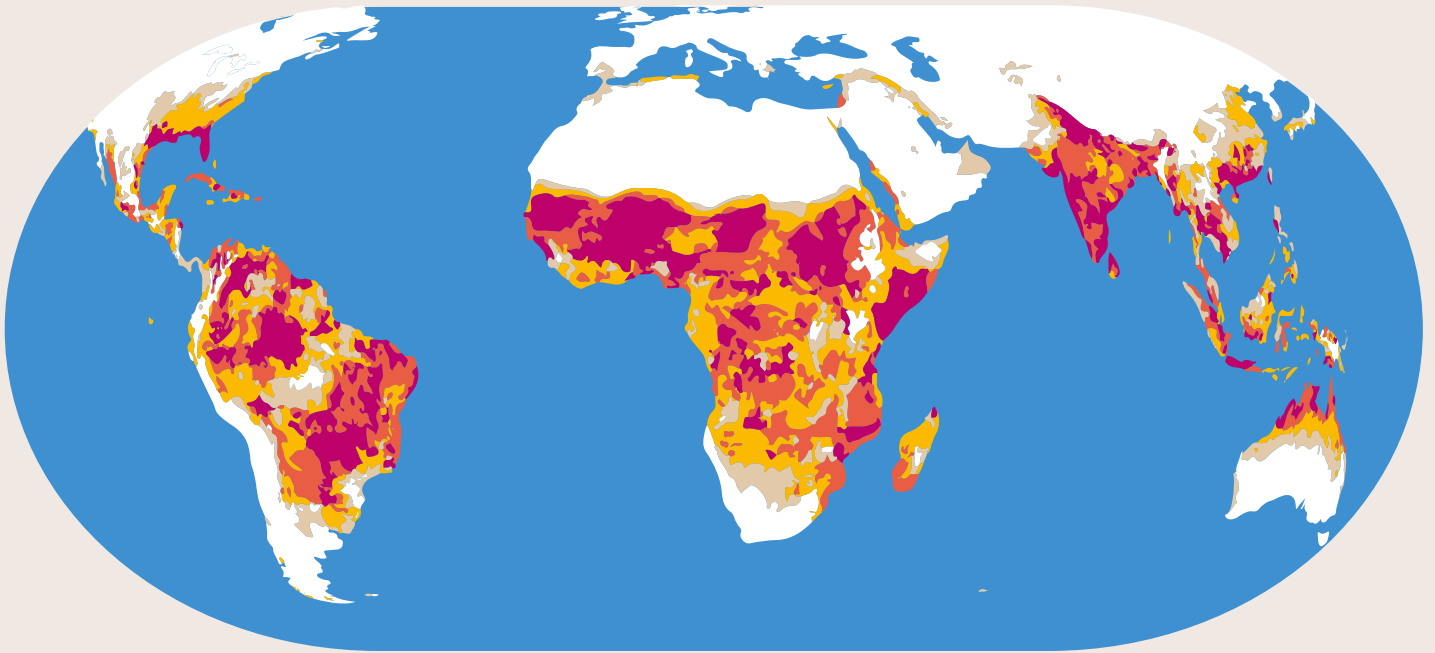
IN 2016, **45.2** MILLION PEOPLE
FLEW OUT OF ENDEMIC AREAS,
11.7 MILLION OF THEM FLEW TO
NON-ENDEMIC CITIES SUITABLE FOR
VIRUS TRANSMISSION.²



84,000 - 170,000
SEVERE CASES PER YEAR AND
29,000 - 60,000 DEATHS¹

1. **World Health Organization.** Key Facts on Yellow Fever 7 May 2019 available at <https://www.who.int/news-room/fact-sheets/detail/yellow-fever>
2. **Brent SE et al.** International travel between global urban centres vulnerable to yellow fever transmission. Bulletin of the World Health Organization 2018;96:343-354B. doi:<https://www.who.int/bulletin/volumes/96/5/17-205658/en/>

MOSQUITOES BELONGING TO THE *AEDES* AND *HAEMOGOGUS* SPECIES



0



1

CAPTION : PROBABILITY OF OCCURRENCE OF THE *AEDES AEGYPTI* MOSQUITO UNDER CURRENT ENVIRONMENTAL AND LAND COVER CONDITIONS

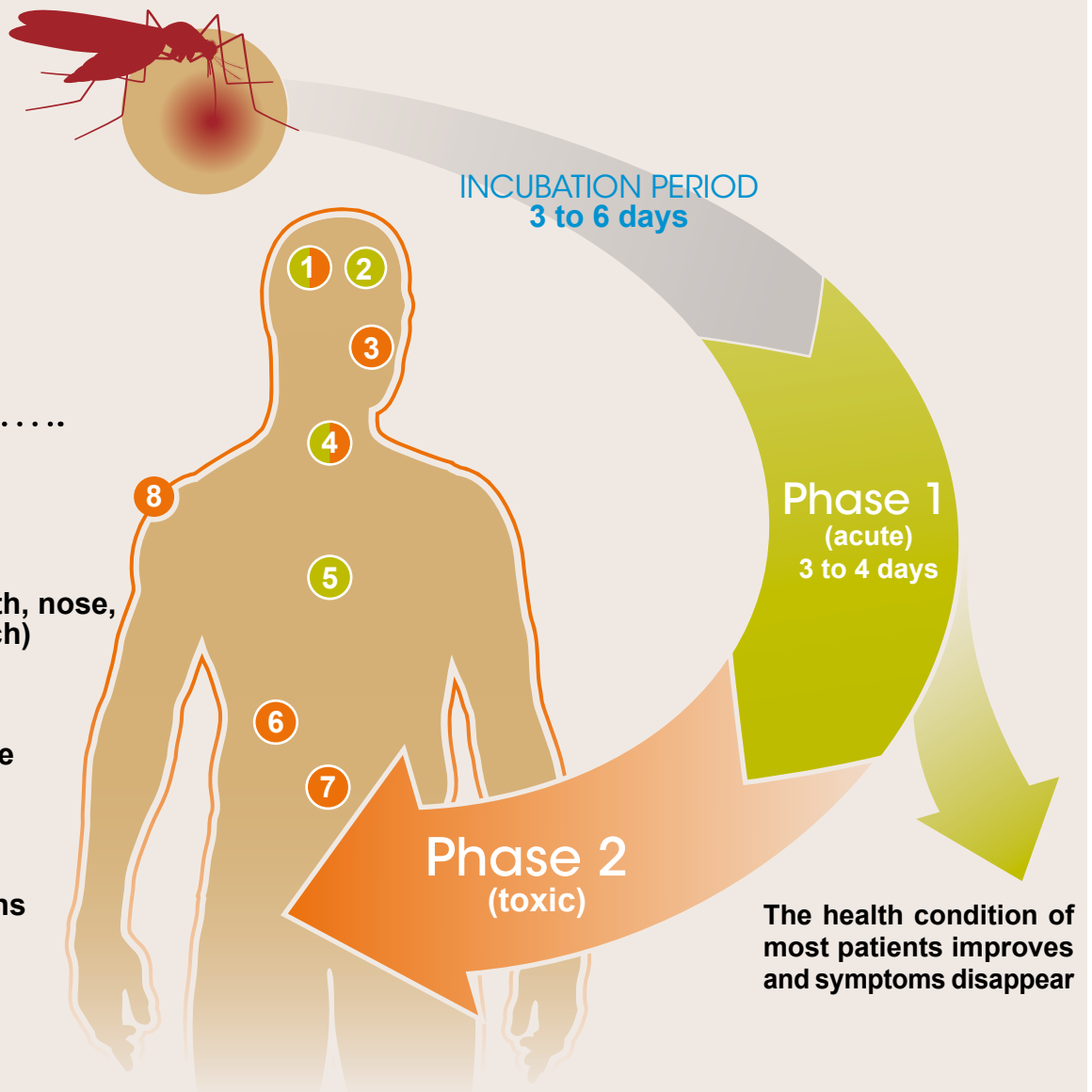
Source: **World Health Organization**. A global strategy to Eliminate Yellow fever Epidemics (EYE), 2017-2026. Available at <https://apps.who.int/iris/handle/10665/272408>.

MAT-GLB-2002763 v 2.0 - March 2021

HUMAN YELLOW FEVER SYMPTOMS

MAIN SYMPTOMS¹

- 1 Fever
- 2 Headaches
- 3 Bleeding (mouth, nose, eyes or stomach)
- 4 Vomiting
- 5 Loss of appetite
- 6 Renal function deteriorates
- 7 Abdominal pains
- 8 Jaundice



1. World Health Organization. Key Facts on Yellow Fever 7 May 2019 available at <https://www.who.int/news-room/fact-sheets/detail/yellow-fever>